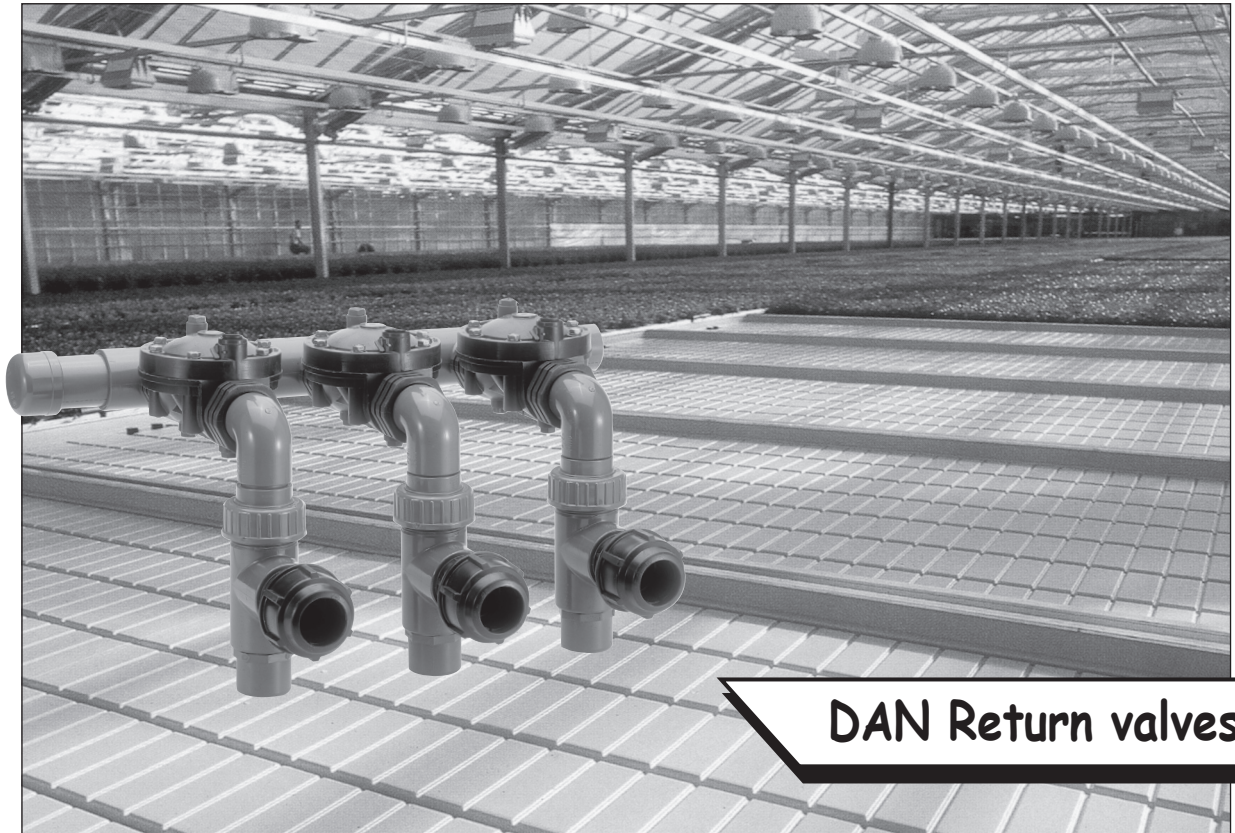


DAN Return valves



DAN Return valves for ebb/flow systems

DAN Return valves is developed to relieve quick drainage on ebb/flow tables.

The DAN Return valves are mounted after the solenoid valves, which are placed on a manifold. When the solenoid valve opens, the water will push the return valve piston down and close the outlet on the return valve. The water will now run to the tables until the solenoid valve is closed, after which a spring will press the piston back and the water can now run back, e.g. to a reservoir.

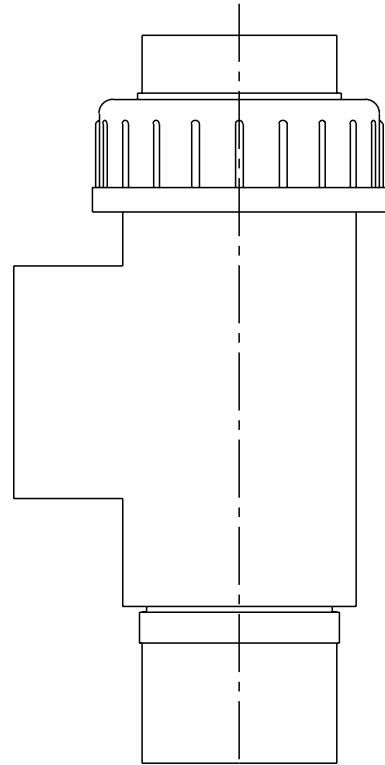
DAN Return valves

Item no.: 0800080

DAN 50 Return valve 1.1/2"

Draining capacity:

Outlet capacity: 60 litres/min
Min. working pressure: 1 bar
Pressure loss: 0,2 bar

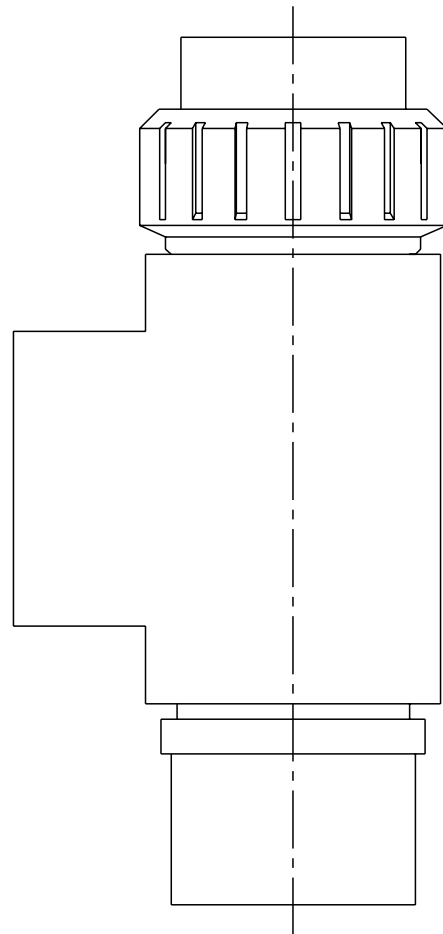


Item no.: 0800090

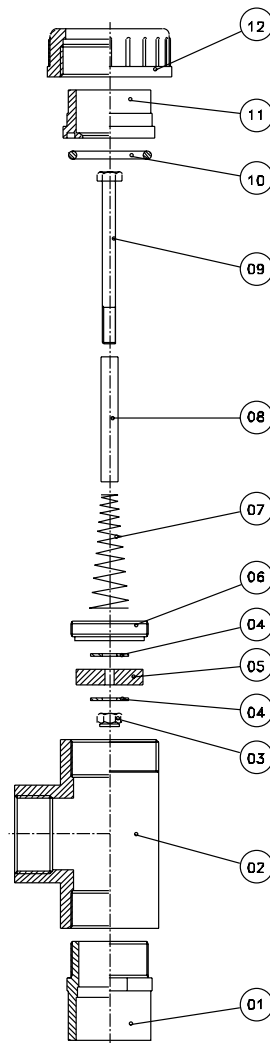
DAN 100 Return valve 2"

Draining capacity:

Outlet capacity: 120 litres/min
Min. working pressure: 1 bar
Pressure loss: 0,2 bar

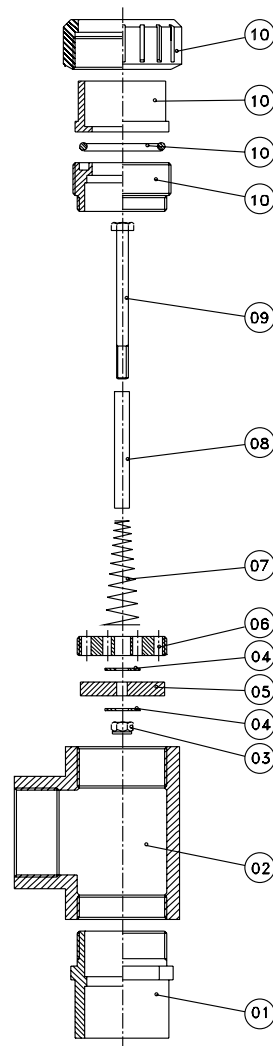


Spareparts DAN 50



Description		Dimension	Item no.
12	Union nut PVC	2"	1210700
11	Collar	40 mm	1210705
10	O-ring for union	40 mm	1210710
09	Set screw	8 x 100 mm A4	1210720
08	Sliding pipe	10 x 1 mm A4	1210723
07	Spring - 12 windings	12 x 70 mm	1210726
06	Perforation plate	1 1/2"	1210715
05	Gasket	42 x 20 mm	1210724
04	Washer plate	8 mm A4	1210722
03	Lock nut	8 mm A4	1210721
02	Tee	1 1/2"	1202214
01	Reducing nipple	50 x 40 mm x 1 1/2"	1201232

Spareparts DAN 100



Description		Dimension	Item no.
10	Union with male thread	63 mm x 2"	1210230
09	Set screw	8 x 100 mm A4	1210720
08	Sliding pipe	10 x 1 mm A4	1210723
07	Spring - 12 windings	12 x 70 mm	1210726
06	Perforation plate	2"	1210716
05	Gasket	56 x 20 mm	1210725
04	Washer plate	8 mm A4	1210722
03	Lock nut	8 mm A4	1210721
02	Tee	2"	1202216
01	Reducing nipple	50 mm x 2"	1201238